



The Junction on Santa Fe

12804 Santa Fe Trail Dr., Lenexa, KS

FOR SALE
OR LEASE



SALE PRICE: \$680,000 | LEASE RATE: \$4,200/MONTH NNN

DEMOGRAPHICS

	1 mile	3 miles	5 miles
Estimated Population	9,795	94,777	221,319
Avg. Household Income	\$72,818	\$96,800	\$99,247

- Fully equipped freestanding restaurant
- Sale includes real estate, equipment, fixtures, and furniture (business name and recipes can also be included)
- Great Johnson County, Kansas location
- New patio addition
- 3,084 SF on two levels (1,542 SF per floor)
- Seating for 100+ including patio seating



CLICK HERE TO VIEW MORE
LISTING INFORMATION

For More Information Contact:

MARK MCCONAHAY | 816.412.7386 | mmcconahay@blockandco.com

EVAN STONE | 816.412.7324 | estone@blockandco.com

Exclusive Agents



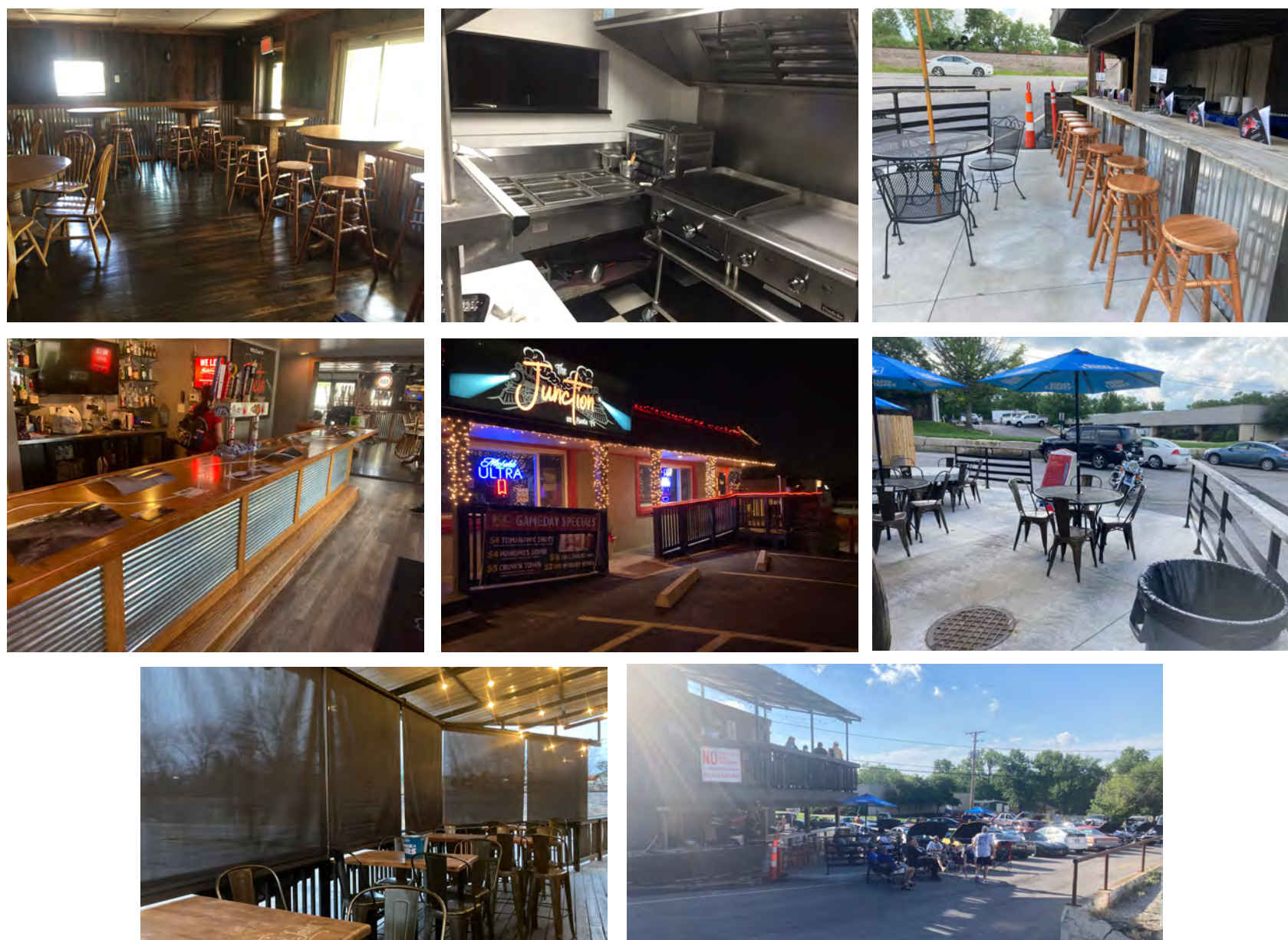


The Junction on Santa Fe

12804 Santa Fe Trail Dr., Lenexa, KS

FOR SALE
OR LEASE

PHOTOS



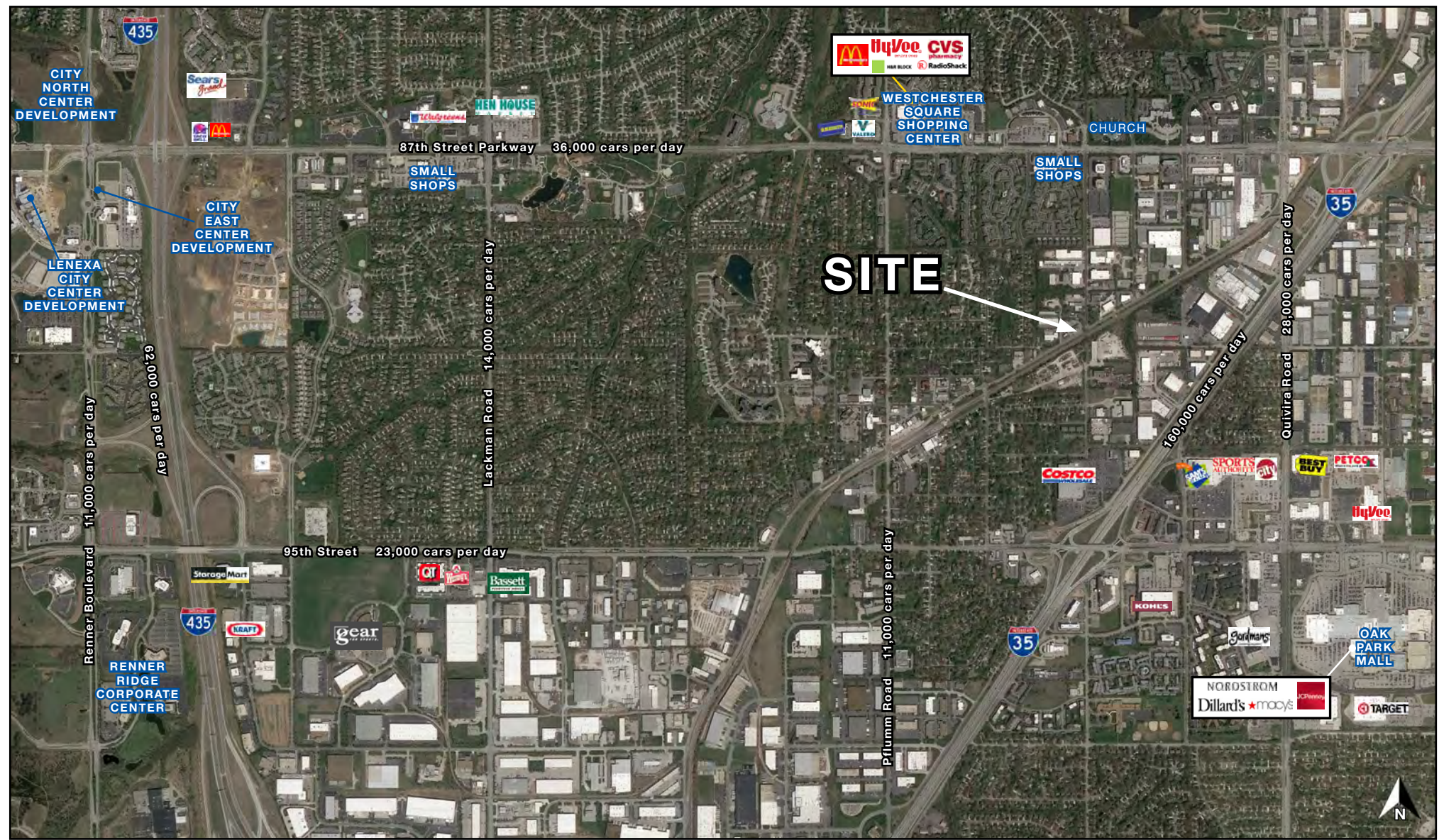


The Junction on Santa Fe

12804 Santa Fe Trail Dr., Lenexa, KS

FOR SALE
OR LEASE

AERIAL

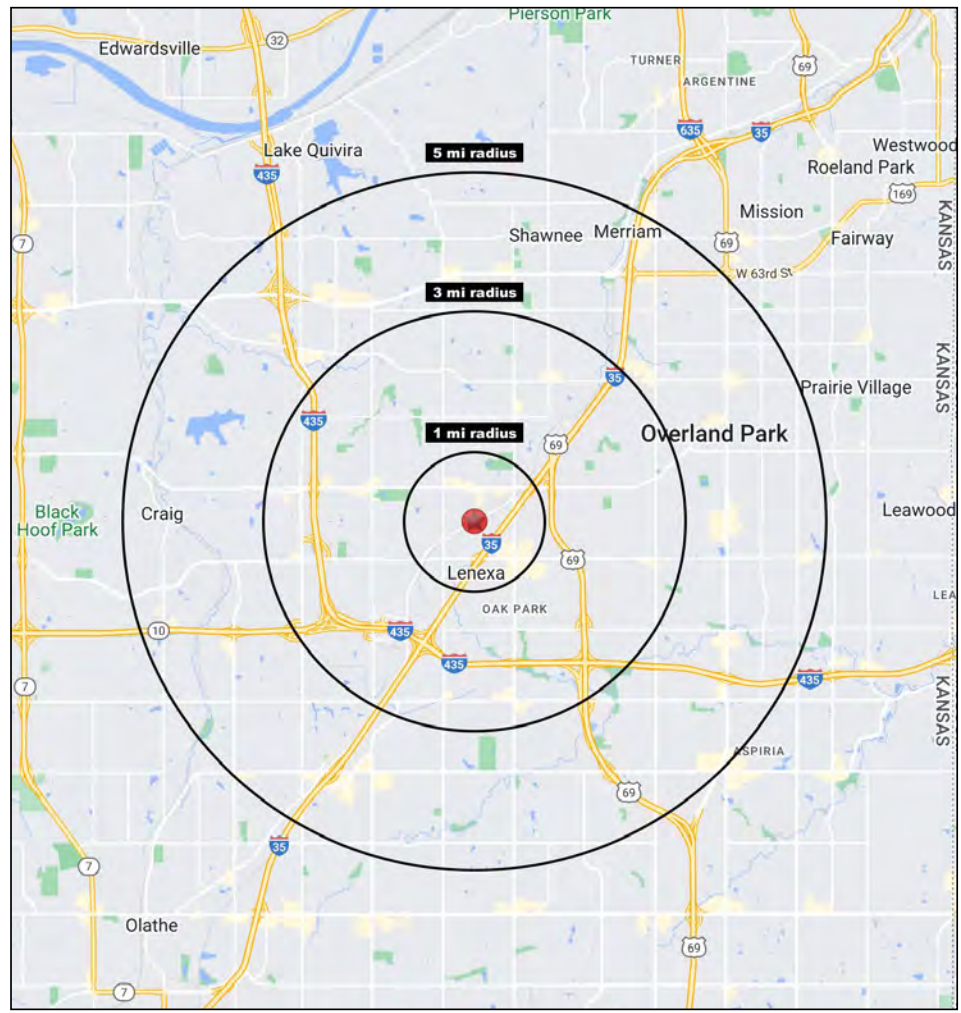
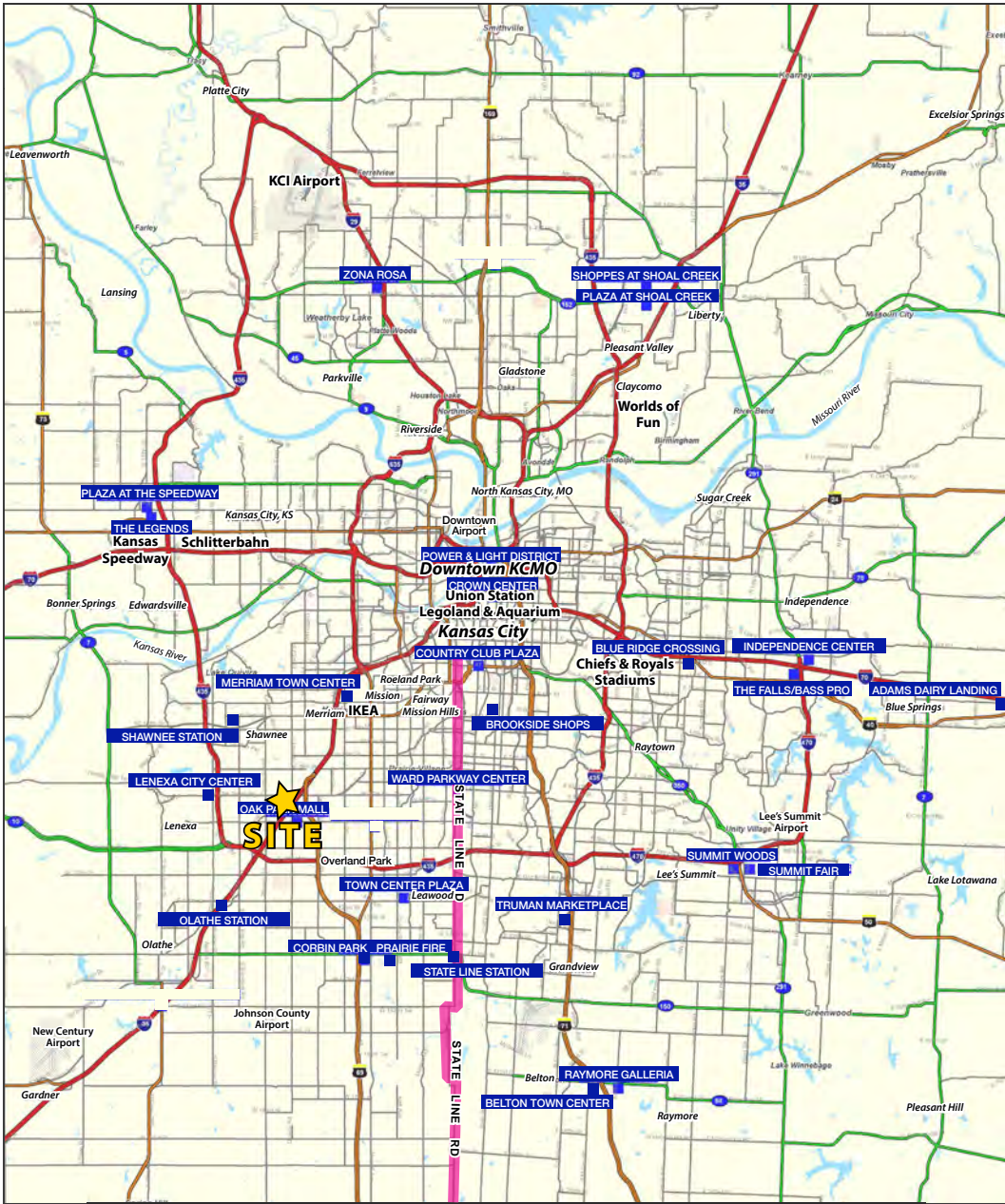




The Junction on Santa Fe

12804 Santa Fe Trail Dr., Lenexa, KS

FOR SALE
OR LEASE





The Junction on Santa Fe

12804 Santa Fe Trail Dr., Lenexa, KS

FOR SALE
OR LEASE

12804 Santa Fe Trail Dr	1 mi	3 mi	5 mi
Lenexa, KS 66215	radius	radius	radius
Population			
2022 Estimated Population	9,795	94,777	221,319
2027 Projected Population	9,877	96,136	224,526
2020 Census Population	9,668	93,834	220,254
2010 Census Population	9,723	89,891	208,893
Projected Annual Growth 2022 to 2027	0.2%	0.3%	0.3%
Historical Annual Growth 2010 to 2022	-	0.5%	0.5%
2022 Median Age	39.9	39.3	39.6
Households			
2022 Estimated Households	4,581	41,220	96,503
2027 Projected Households	4,688	42,445	99,219
2020 Census Households	4,521	40,790	96,009
2010 Census Households	4,401	37,944	89,402
Projected Annual Growth 2022 to 2027	0.5%	0.6%	0.6%
Historical Annual Growth 2010 to 2022	0.3%	0.7%	0.7%
Race and Ethnicity			
2022 Estimated White	69.6%	74.4%	75.9%
2022 Estimated Black or African American	11.1%	7.3%	6.2%
2022 Estimated Asian or Pacific Islander	3.7%	3.8%	4.6%
2022 Estimated American Indian or Native Alaskan	0.5%	0.5%	0.5%
2022 Estimated Other Races	15.1%	14.0%	12.8%
2022 Estimated Hispanic	14.6%	11.6%	10.5%
Income			
2022 Estimated Average Household Income	\$72,818	\$96,800	\$99,247
2022 Estimated Median Household Income	\$63,080	\$81,817	\$83,969
2022 Estimated Per Capita Income	\$34,390	\$42,177	\$43,379
Education (Age 25+)			
2022 Estimated Elementary (Grade Level 0 to 8)	4.1%	2.2%	1.9%
2022 Estimated Some High School (Grade Level 9 to 11)	4.7%	2.6%	2.5%
2022 Estimated High School Graduate	23.1%	16.7%	16.5%
2022 Estimated Some College	21.9%	21.2%	20.0%
2022 Estimated Associates Degree Only	7.3%	9.5%	8.4%
2022 Estimated Bachelors Degree Only	25.9%	32.0%	32.5%
2022 Estimated Graduate Degree	13.0%	15.8%	18.2%
Business			
2022 Estimated Total Businesses	880	4,603	10,592
2022 Estimated Total Employees	12,847	82,399	182,900
2022 Estimated Employee Population per Business	14.6	17.9	17.3
2022 Estimated Residential Population per Business	11.1	20.6	20.9

©2022. Sites USA. Chandler, Arizona. 480-491-1112 Demographic Source: Applied Geographic Solutions 6/2022. TIGER Geographv - RS1